

## AGENDA

**Meeting:** MALMESBURY AREA BOARD  
**Place:** Malmesbury Town Hall  
**Date:** Wednesday 10 November 2010  
**Time:** 7.00 pm

---

Including the Parishes of Ashton Keynes, Brinkworth, Brokenborough, Charlton, Crudwell, Dauntsey, Easton Grey, Great Somerford, Hankerton, Lea & Cleverton, Leigh, Little Somerford, Luckington, Malmesbury, Minety, Norton & Foxley, Oaksey, Sherston, Sopworth and St Paul Malmesbury Without

---

**The Area Board welcomes and invites contributions from members of the public. The Chairman will try to ensure that everyone who wishes to speak will have the opportunity to do so.**

If you have any requirements that would make your attendance at the meeting easier, please contact your Democratic Services Officer.

**Refreshments and networking opportunities will be available from 6.30 pm.**

---

Please direct any enquiries on this agenda to Alexa Smith (Democratic Services Officer), on 01249 706610 or [alexa.smith@wiltshire.gov.uk](mailto:alexa.smith@wiltshire.gov.uk)

or Miranda Gilmour (Malmesbury Community Area Manager), on 01672 515742 or [miranda.gilmour@wiltshire.gov.uk](mailto:miranda.gilmour@wiltshire.gov.uk)

All the papers connected with this meeting are available on the Council's website at [www.wiltshire.gov.uk](http://www.wiltshire.gov.uk)

Press enquiries to Communications, on 01225 713114 / 713115.

---

### Wiltshire Councillors

Cllr John Thomson, Sherston (Chairman)  
Cllr Simon Killane, Malmesbury (Vice Chairman)

Cllr Carole Soden, Minety  
Cllr Toby Sturgis, Brinkworth

Items to be considered	Time
<p>1. <b>Chairman's Welcome and Introductions</b> (<i>Pages 1 - 2</i>)</p> <p>The Chairman will welcome those present to the meeting.</p>	7.00 pm
<p>2. <b>Apologies for Absence</b></p>	
<p>3. <b>Minutes</b> (<i>Pages 3 - 16</i>)</p> <p>To approve and sign as a correct record the minutes of the meeting held on 15 September 2010.</p>	
<p>4. <b>Declarations of Interest</b></p> <p>Councillors are requested to declare any personal or prejudicial interests or dispensations granted by the Standards Committee.</p>	
<p>5. <b>Chairman's Announcements</b> (<i>Pages 17 - 20</i>)</p> <p>The Chairman will provide information, as in the agenda pack.</p>	7.10 pm
<p>6. <b>Partner Updates</b> (<i>Pages 21 - 30</i>)</p> <p>To receive updates from the following partners:</p> <ul style="list-style-type: none"> <li>a) Wiltshire Police</li> <li>b) Wiltshire Fire and Rescue Service</li> <li>c) NHS Wiltshire</li> <li>d) Malmesbury and the Villages Community Area Partnership</li> <li>e) Town and Parish Councils.</li> </ul>	7.15 pm
<p>7. <b>Car Parking Strategy Consultation Feedback</b></p> <p>To provide Malmesbury Area Board with feedback on the consultation undertaken.</p>	7.30 pm
<p>8. <b>Community Issues Update</b> (<i>Pages 31 - 38</i>)</p> <p>The Community Area Manager will provide a summary of current community issues and the Area Board will agree those to be closed.</p>	7.45 pm
<p>9. <b>Area Board Funding</b> (<i>Pages 39 - 46</i>)</p> <p>Councillors will be asked to consider the Community Area Grants and make recommendations on the applications received, as follows:</p> <ul style="list-style-type: none"> <li>a) Oaksey Parish Council - seeking £600 towards the cost of a replacement notice board, conditional on the balance of funding being in place.</li> <li>b) Athelstan Players - seeking £746 to replace fascia boards</li> </ul>	7.55 pm

and undertake repairs to guttering and downpipes at the Athelstan Players Studio, conditional on the balance of funding being in place.

- c) 1<sup>st</sup> Sherston Scout Group – seeking £3319 towards the cost of flooring, security and electrical and water heating at the scout headquarters.

And to consider other financial matters.

- |     |   |                 |
|-----|---|-----------------|
| 10. | <b>Highways Winter Maintenance</b> ( <i>Pages 47 - 48</i> )   | <b>8.05 pm</b>  |
|     | Councillors will be asked to determine the allocation of new grit bins in the Community Area (see attached).  |                 |
| 11. | <b>Cabinet Representative</b>   | <b>8.15 pm</b>  |
|     | Councillor Jane Scott will provide a short overview of her role as Leader of Wiltshire Council. There will then be the opportunity to ask Councillor Scott questions. |                 |
| 12. | <b>Public Consultation</b> ( <i>Pages 49 - 50</i> )   | <b>8. 45 pm</b> |
|     | To include information on the consultation on the Wiltshire Local Transport Plan 2011-2026.   |                 |
| 13. | <b>Evaluation and Close</b> ( <i>Pages 51 - 52</i> )  | <b>9.00 pm</b>  |

#### **Future Meeting Dates**

Wednesday, 19 January 2011

7.00 pm

Malmesbury Town Hall

Wednesday, 16 March 2011

7.00 pm

Ashton Keynes Village Hall

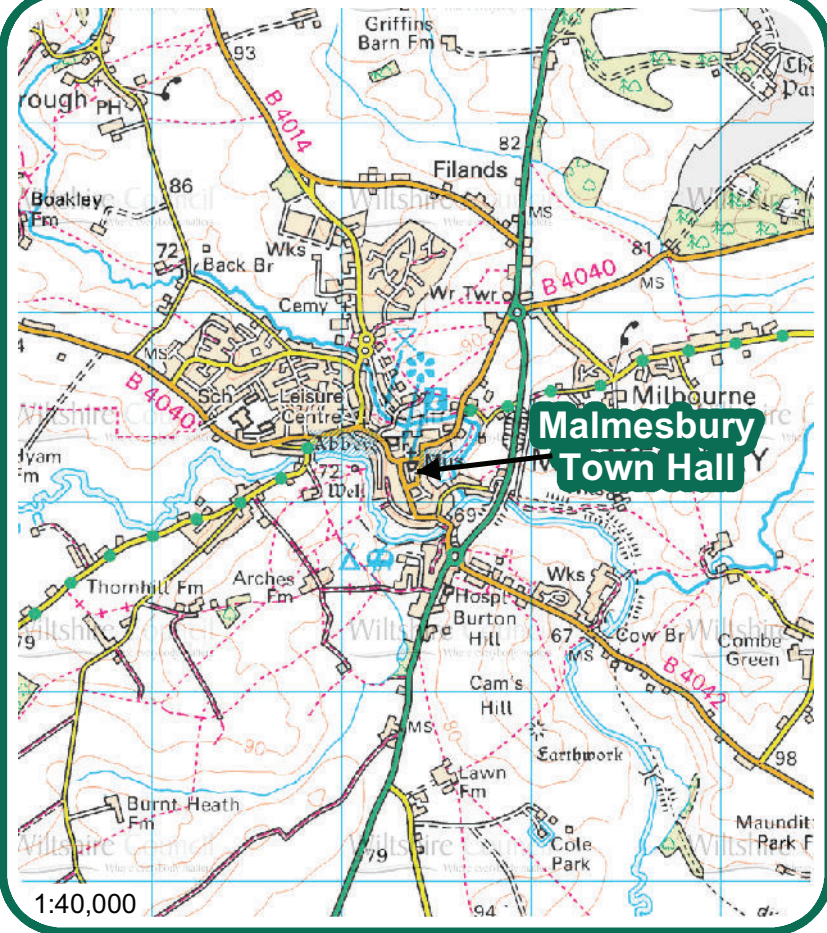
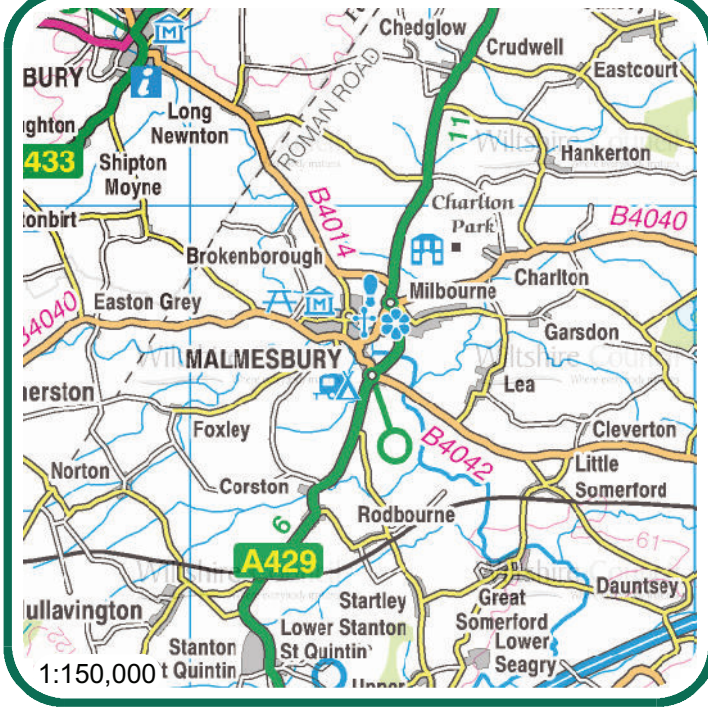
Wednesday, 4 May 2011

7.00 pm

Tbc

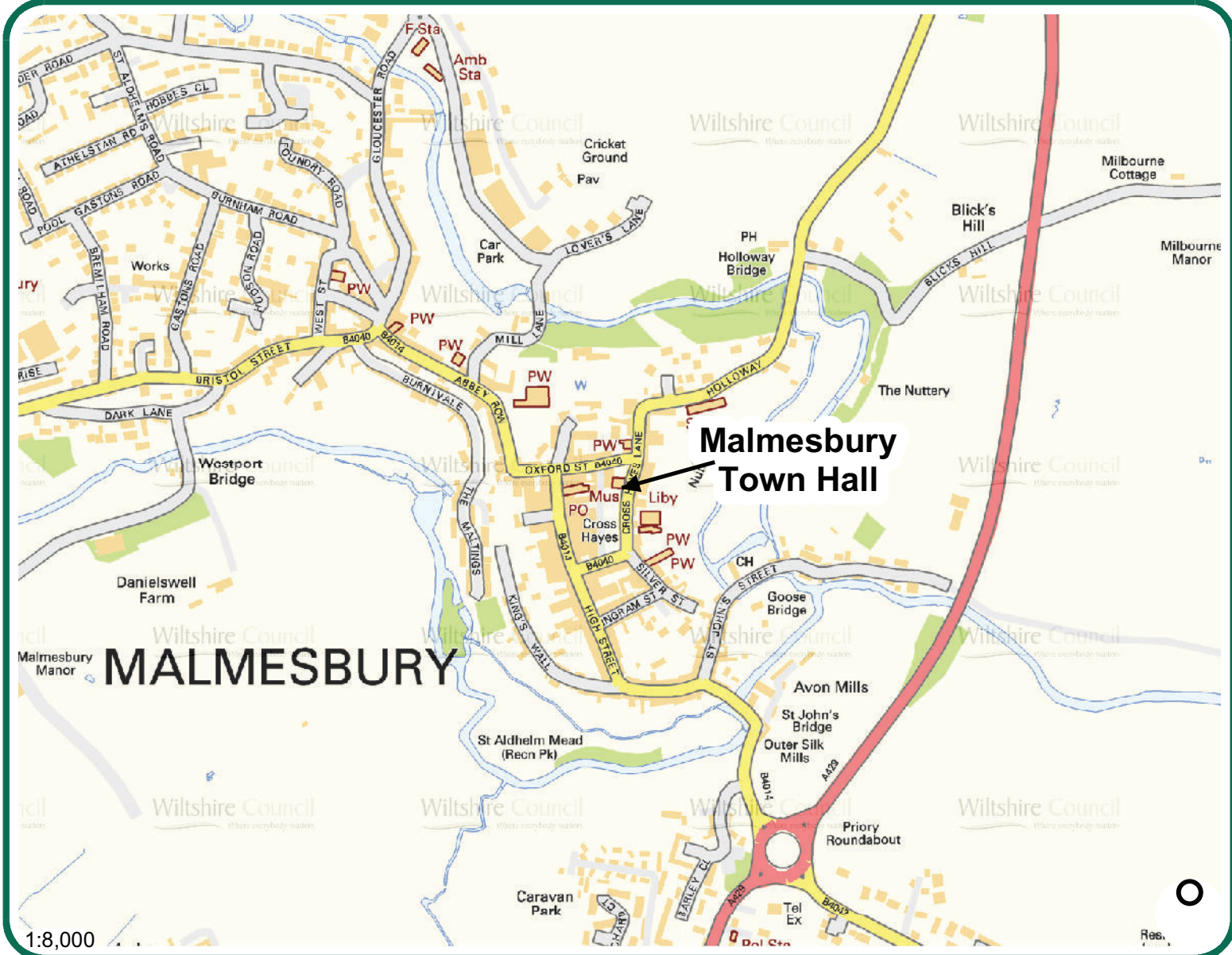






**Malmesbury Town Hall**  
**Cross Hayes**  
**Malmesbury**  
**Wiltshire**  
**SN16 9B2**

**Wiltshire Council**  
 Where everybody matters







# MINUTES

**Meeting:** MALMESBURY AREA BOARD  
**Place:** Malmesbury School  
**Date:** 15 September 2010  
**Start Time:** 7.00 pm  
**Finish Time:** 9.00 pm

---

Please direct any enquiries on these minutes to:

Alexa Smith (Democratic Services Officer) Tel: 01249 706612/Email: alexa.smith@wiltshire.gov.uk, Tel: 01249 706612 or (e-mail) [alexa.smith@wiltshire.gov.uk](mailto:alexa.smith@wiltshire.gov.uk)

Papers available on the Council's website at [www.wiltshire.gov.uk](http://www.wiltshire.gov.uk)

---

## **In Attendance:**

### **Wiltshire Councillors**

Cllr Simon Killane (Vice Chairman), Cllr Carole Soden, Cllr Toby Sturgis and Cllr John Thomson (Chairman)

Cllr Keith Humphries (Cabinet Representative – Health and Wellbeing)

### **Wiltshire Council Officers**

Miranda Gilmour (Community Area Manager), Adrian Hampton (Head of Local Highways and Streetscene), Nigel Hunt (Head of School Buildings and Places), Alexa Smith (Democratic Services Officer) and Jacqui White (Service Director, Shared Services and Customer Care)

### **Town and Parish Councillors**

Ashton Keynes Parish Council – Ian Woods  
Brinkworth – Rob Bailey  
Charlton – S Burne  
Crudwell - Terry Fraser\*  
Hankerton – Terry Mockler\*  
Lea and Cleverton - John Parmiter  
Luckinton and Alderton – George Lyneham\*  
Malmesbury – Steve Cox and Ray Sanderson  
Minety – Graham Thorne\*  
Norton and Foxley – Peter Campaigne\*  
Sherston – Martin Rea\*

St Paul Malmesbury Without – Roger Lee\*

\* = Denotes nominated representative

**Partners**

Wiltshire Fire & Rescue Service – Michael Franklin

Wiltshire Police - Sergeant Martin Alvis and Inspector Steve Cox

Malmesbury and the Villages Community Area Partnership – Alice Cross-Jones and Sid Jevons\* and Sue Webb

Gazette and Herald - Joe Ware

Malmesbury ABC – Sam Winstone

Malmesbury and St Paul Without Residents Association – Roger Budgen

Malmesbury School – C Morris

Malmesbury River Valleys Trust – Frances Goldstone

Wiltshire and Gloucestershire Standard - Tina Robins

**Members of Public in Attendance: 36**

**Total in Attendance: 71**

---



<u>Agenda Item No.</u>	<u>Summary of Issues Discussed and Decision</u>	<u>Action By</u>
1.	<p><u>Chairman's Welcome and Introductions</u></p> <p>The Chairman welcomed those present to the meeting, including a delegation of visitors from Cambridge who were interested in the work of the Area Board.</p>	
2.	<p><u>Apologies for Absence</u></p> <p>Apologies of absence were received from John Cull (Lea and Cleverton Parish Council), Warren Hateley (Malmesbury Chamber of Commerce), Ted Palmer (Malmesbury Residents Association), Tony Pooley (Little Somerford Parish Council), and John Tremayne (Easton Grey Parish Council).</p>	
3.	<p><u>Minutes</u></p> <p>The minutes of the meeting held on 7 July 2010 were approved and signed as a correct record.</p>	
4.	<p><u>Declarations of Interest</u></p> <p>Councillor Killane declared a prejudicial interest in agenda item number fourteen, in the application from Malmesbury Town Council seeking funding from the Performance Reward Grant Scheme towards a multi-use games area at St Aldhelms Mead, as a Malmesbury Town Councillor. Councillor Killane did not speak or vote and left the meeting for this item of business.</p>	
5.	<p><u>Chairman's Announcements</u></p> <p>The Chairman drew attention to the written announcements included in the agenda pack. Councillor Jane Scott, Leader of Wiltshire Council, would be attending the next Malmesbury Area Board meeting on Wednesday 10 November 2010. Please submit any questions to Councillor Scott in advance to Alexa Smith, Democratic Services Officer, on 01249 706612 or <a href="mailto:alexa.smith@wiltshire.gov.uk">alexa.smith@wiltshire.gov.uk</a> by Wednesday 27 October.</p>	
6.	<p><u>Partner Updates</u></p> <p>The Chairman noted the written updates from partners included with the agenda pack and invited partners to add any further information if appropriate.</p> <p>a) The written update from Wiltshire Police was noted. It was underlined that the closure of the Wiltshire Camera Road</p>	

Safety Unit would not change any of the processes around Community Speed Watch and the Community Area would still have the enforcement options of the Wiltshire Roads Policing Unit and Wiltshire Police Area Officers. There had been an outstanding Community Speed Watch scheme in Dauntsey. Over recent weeks five drivers were monitored on three separate occasions exceeding the speed limit. The vehicle details were passed to the Wiltshire Police Roads Policing Unit who targeted these drivers. This resulted in three individuals being caught speeding and issued with fines and penalty points on their driving licenses. .

- b) The written update from Wiltshire Fire and Rescue Service was noted.
- c) The written update from NHS Wiltshire was noted.
- d) Sid Jevons went through the written update from Malmesbury and the Villages Community Area Partnership. The Partnership had formed a team to lead a consultation on reduced street lighting. The first phase of consultation, identifying the parishes that would like to be involved, was nearly complete and the next phase would be to look into which street lights to affect. A speed bump survey for Malmesbury was being undertaken jointly by Malmesbury Town Council and the Partnership. Questionnaires were being distributed within the local area to be returned by 1 October. The Chairman expressed concern that the survey had not been received by a proportion of the meeting. Ray Sanderson commented that only those living in Malmesbury town had been targeted by the survey, however there were locations where people were able to collect a survey, including the health centre and the BP garage. In an amendment to the agenda papers, the next Community Safety Forum meeting would be held on 30 September at Sherston Village Hall at 7.00 pm for a 7.30 pm start.

#### **Chairman's Statement**

The partner updates at the meeting were followed by a Chairman's statement regarding proposed development in Malmesbury. There had been a Malmesbury Town Council public meeting on 14 September. The Wiltshire 2026 consultation at the end of last year had identified a preferred housing option for Malmesbury of 200 dwellings located to the north of Malmesbury. Gleeson Strategic Land were promoting this site and intending to hold a public exhibition at the Town Hall in November. The public response from the Malmesbury Community Area to the Wiltshire 2026 consultation showed a mixed response to the level of growth for the town, although the majority did oppose growth. A key aspect of the opposition was that infrastructure in the town was currently at capacity. The abolition of the Regional Spatial Strategy and the

	<p>advance of the Localism Bill potentially offered greater flexibility in plan making and the opportunity for Malmesbury Community Area to have more influence on future housing development in the town. Wiltshire Council would be seeking to bring forward housing as part of a plan led process in consultation with the local community, including the Town Council and Community Area Board. Whilst the site itself was well located to accommodate growth for Malmesbury, it was vital that the appropriate infrastructure and high quality design underpinned any development that came forward. A pragmatic approach would be to carefully phase development in Malmesbury and call for the development to be delayed until later in the planning period for Wiltshire. This would enable a thorough assessment of infrastructure requirements to be made and for the outcomes of this infrastructure assessment to be addressed in consultation with the local community.</p>	
7.	<p><u>Update on Malmesbury Schools</u></p> <p>Nigel Hunt, Head of School Buildings and Places, gave a short update on school numbers in the Malmesbury Community Area. He explained a document provided at the meeting showing the number of children in the primary schools and the secondary school in each year group. This was derived from a census that was undertaken every term. Pupil numbers for primary school children in Malmesbury were very close to the physical capacity. Eight pupils were being transported in total from the town to village schools because of pressure in the town at primary school age.</p> <p>This update was followed by a question and answer session which covered the following issues:</p> <ul style="list-style-type: none"> <li>• If preference patterns for the schools remain the same (some parents in the town always choose to send their children to village schools), there were sufficient places for children coming up to primary school age in town.</li> <li>• School provision was linked to the planning process in that the relevant department was consulted at a strategic level on an ongoing basis and again when a planning application was received. Contributions were also sought with new development for provision of school places.</li> <li>• Primary school places in the town had been filled quickly as the number of parents who chose to send their children to village schools from the town had reduced markedly in recent years. There had also been movement into the town in the last eighteen months of families with primary school age children.</li> <li>• It has been made clear that with future housing development, a child coming into the area could not be guaranteed a place in a Malmesbury primary school.</li> </ul>	

	<ul style="list-style-type: none"> <li>• National Government policy was clear that if a parent chose to send their child to a school outside their catchment area, they were responsible for transport costs. If transport was required for a child travelling more than 2.5 miles to a school not of their choosing, the local authority was responsible for transport provision.</li> <li>• There was no capacity to extend Malmesbury Primary School. St Joseph's school were investigating whether the school could be extended.</li> </ul> <p><b><u>Decision</u></b>  <b>Nigel Hunt would update on school numbers in the Malmesbury Community Area at a future Area Board meeting when results from the St Joseph's school investigation into extending were available.</b></p>	
8.	<p><u>Leisure Facilities Review</u></p> <p>Councillor Stuart Wheeler, Cabinet Representative for Leisure, Sport and Culture, gave a presentation on the future of leisure facilities in Wiltshire. There was an excellent facility in Malmesbury and Wiltshire Council was not proposing to change this in a great way. The Activity Zone would continue to be managed by DC Leisure and their contract had been extended to 2015 to allow for time for all Council-owned leisure facilities to be reviewed.</p> <p>Wiltshire Council had inherited a form of financial responsibility for 23 facilities around the county, including many facilities which were out of date and inefficient. The situation was unsustainable, with £93 million required over the next 25 years to sustain the existing stock, excluding any investment to improve the buildings.</p> <p>As such, proposals had been developed on the basis of £117 million investment over 25 years, to deliver a high quality, efficient and sustainable service. This would also go some way to meeting carbon reduction targets, with leisure facilities currently accounting for 21% of the Council's carbon emissions.</p> <p>The proposals would see four new facilities within campuses, with another two existing facilities being significantly enhanced and retained. The remaining facilities would also receive significant capital investment, before being made available for transfer to community management arrangements, as part of a robust process including support and identification of suitable business models, phased financial support resulting in independency and potentially the transfer of freehold. It was acknowledged that different mechanisms and solutions would suit different facilities, and so a report on options had been commissioned to give</p>	

	<p>examples of arrangements which had been established in other areas.</p> <p>It was noted that no decisions would be made by Wiltshire Council until consultation had been completed. Consultation on the proposals was taking place up to 29 October 2010, with details available on the Wiltshire Council website, at libraries, leisure facilities and offices. A report on the outcome of the consultation would be submitted to the Cabinet in December, and the Council would consider the results in February 2011.</p> <p>The presentation was followed by a short question and answer session. This covered the following main points:</p> <ul style="list-style-type: none"> <li>• The Activity Zone was working well with local schools</li> <li>• Malmesbury Marlins expressed satisfaction with the Activity Zone pool, its management and its provision for disabled individuals</li> <li>• Free swimming for those aged 60+ would not continue after September 2010 as funding for this scheme was no longer available from central Government.</li> </ul> <p>A question was also raised about the capacity of The Activity Zone. Although the relevant Officer did not have the information to hand, since the Area Board meeting, Wiltshire Council leisure representatives had discussed capacity levels with the operator DC Leisure Management Limited (DCL) and could report that the facility was operating within comfortable capacity limits and that there was sufficient spare capacity to cater for growth in all areas of the business. This translated as between approximately 20-25% growth in the fitness area, 25% growth in swimming and around 15% capacity left available for casual sports hall activities. In addition there was significant capacity in squash as this sport had seen a national decline in usage over the past few years. Wiltshire Council's view was that in strategic planning terms this represented an acceptable level of usage as there was sufficient capacity for growth when considering future demographic fluctuations, but the figures also demonstrated how well used the facility was.</p> <p>Councillor Wheeler then invited those present to indicate their views about the development of the leisure service, by means of the electronic voting handsets provided.</p>	
9.	<p><u>Cabinet Representative</u></p> <p>Councillor Keith Humphries, Cabinet Representative for Health and Wellbeing, provided a short overview of his responsibility. This included Health, Community Safety, Environmental Health, Trading Standards, Licensing and Emergency Planning in the Community</p>	

	<p>Area.</p> <p>Health and Wellbeing in general terms encompassed trying to keep the people of Wiltshire safe and protected largely by working with Wiltshire Council partners to deliver the best possible service. Last year Consumer Direct had received 82 reports of scam telephone callers from people in Wiltshire. Nearly all of these had been received by elderly and vulnerable people. Councillor Humphries asked for people to continue to report scam telephone calls. He also provided information about a new county wide initiative to prevent dog fouling, starting with a programme of education in schools.</p> <p>Councillor Humphries could be contacted directly on 01985 218255 or <a href="mailto:keith.humphries@wiltshire.gov.uk">keith.humphries@wiltshire.gov.uk</a></p>	
10.	<p><u>Completed Highways Works List 2010</u></p> <p>Adrian Hampton, Head of Local Highways and Streetscene, gave a short presentation on work undertaken by the Highways department in the Community Area since 1 April 2010, please find a list of completed works attached. The presentation included completed minor carriageway repair sites, programmed sites and repairs to be scheduled. The department was also working to improve communication with the back office and developing links with the Area Board to set local priorities.</p>	
11.	<p><u>Parish Council Involvement with Malmesbury Area Board</u></p> <p>The Community Area Manager provided feedback from two successful 'Tea and Talk' meetings held with town/parish councils within the Community Area. She aimed to repeat these meetings on an annual basis. The Councillors were asked to consider eleven recommendations from the meetings, contained in the report.</p> <p><b><u>Decision</u></b>  <b>The Area Board would accept the following recommendations from the 'Tea and Talk' meetings:</b></p> <p><b>Information about the community issues process and how issues are handled is sent to parish councils</b></p> <p><b>Community issues are forwarded to parish/town councils to gauge whether they are collective/community issues or individual issue more appropriate as ward work for councillors</b></p> <p><b>Parish councils be invited to ask their councillors to sign up individually to the Community Area Network to ensure the</b></p>	



	<p><b>speedy delivery of Malmesbury Area Board information</b></p> <p><b>M&amp;VCAP are encouraged to revitalise their contact with parishes/parish councils</b></p> <p><b>M&amp;VCAP are encouraged to re-present their Partner Update for the Area Board, to concentrate on punchy information about their current projects and inviting specific community involvement</b></p> <p><b>The divisional highways team is requested to produce an annual plan for the Malmesbury Community Area of work to be carried out and provide email alerts to the parish clerk where it conflicts with the monthly plan already circulated to parish councils.</b></p> <p>There was the need for further discussion regarding the remaining recommendations in the report. Sid Jevons thanked Miranda Gilmour for her work on improving parish involvement with Malmesbury Area Board. These would be discussed further by the Area Board.</p> <p><b><u>NB</u></b>  <b>Subsequent to the meeting, the Area Board decided that:</b></p> <p><b>Community issues would be placed higher on the agenda when possible</b></p> <p><b>The public would be reminded through the Community Area Network they can go online to submit and track their community issues</b></p> <p><b>The Area Board would continue to arrange round table meetings with partners when appropriate, such as for the Local Transport Plan</b></p> <p><b>The Area Board would consider issues from M&amp;VCAP's parish forum as items for future debate/consideration</b>  <b>The Area Board would continue to work towards limiting the number of items on future agendas.</b></p>	
12.	<p><u>Wiltshire Council's New Approach to Providing Face to Face Customer Access to Council Services</u></p> <p>This item was postponed and removed from the agenda.</p>	
13.	<p><u>Community Issues Update</u></p> <p>The Community Area Manager introduced the report and invited</p>	

Councillors to agree the next steps for a number of issues.

**Decision**

**Issues 656 (St Joseph's Primary School governors wished to renegotiate their School Travel Plans) and issues 1130 and 1134 (though speeding was not the issue, but people not stopping at the zebra crossing) would be kept open in amended form.**

The Community Area Manager was awaiting responses from four town/parish councils with respects to participating in Community Speedwatch schemes.

**Decision**

**The Community Area Manager would close issues 748 and 749 (flooding related issues in Dauntsey that were being addressed through legal proceedings) and issue 1024 (a replacement finger post at Willesley T junction that was now in place).**

**Decision**

**Issues 334 (safety at North End crossroads, Ashton Keynes), 562 (crossing needed on Tetbury Hill Road near Filands) and 620 (footpath required in Dauntsey) were referred to the Malmesbury Area Board Local Transport Plan Allocation Group.**

**Decision**

**Issues 406 (residents parking in Malmesbury) and 655 (St Joseph's seek parking permits for Cross Hayes) would be picked up at the November meeting when Councillor Tonge and parking officers would attend to provide information about Wiltshire Council's parking strategy consultation.**

**Decision**

**The results of the joint survey by Malmesbury Town Council and Malmesbury & Villages Community Area Partnership relating to the speed bumps in town, dropped kerbs and other highways issues would be presented at the January 2011 Area Board meeting. This would address issues 438 and 440.**

The Community Area Manager felt that it would be helpful if people could inform her when an issue had been addressed, so that an accurate record could be kept, accepting that it was the responsibility of Officers and partners to keep her updated. Please contact Miranda Gilmour on 01672 515742 or [miranda.gilmour@wiltshire.gov.uk](mailto:miranda.gilmour@wiltshire.gov.uk).

14.	<p><u>Community Area Grants Scheme</u></p> <p>Consideration was given to the three funding allocations made to the Community Area Grants Scheme.</p> <p><b><u>Decision</u></b>  <b>Malmesbury Netball Club</b> were awarded £1,000 to cover set up costs of establishing a netball club in Malmesbury serving the whole community.</p> <p><b><u>Reason</u></b>  <i>The application meets the 2010/11 grant criteria and the emerging 'People, Places and Promises – Wiltshire Community Plan 2011-2026' recognises the need for people to take responsibility for their own health through exercise and other factors.</i></p> <p><b><u>Decision</u></b>  <b>Crudwell Short Mat Bowls Club</b> were awarded £802 to purchase bowls equipment suitable for older and less able players.</p> <p><b><u>Reason</u></b>  <i>The application meets the 2010/11 grant criteria and would help the club to expand membership further as well as retain current members. It would encourage older and less able members through the provision of lighter woods as well as some younger players who might also value using lighter equipment.</i></p> <p><b><u>Decision</u></b>  <b>Kings Day Nursey School</b> were awarded £651 to purchase a range of equipment for use by children attending new breakfast and afterschool clubs at the nursery.</p> <p><b><u>Reason</u></b>  <i>The application meets the 2010/11 grant criteria and the application demonstrates links to the Malmesbury &amp; Villages Community Plan 2009-2013, which refers to the need to support early years, toddler groups and pre-schools in villages.</i></p>	
15.	<p><u>Performance Reward Grants Scheme</u></p> <p>The Area Board considered five applications to go forward under the Performance Reward Grant Scheme.</p> <p><u>St Aldhelm's Mead, Malmesbury Play Area Enhancement Scheme</u>  Malmesbury Town Council were seeking £73,656 to create a multi-</p>	

use games area, including an all weather sports pitch, at St Aldhelm's Mead for use by mainly older children and adults. Councillors were supportive of the scheme, however expressed concern regarding the management and maintenance of the play area. They advised that the applicant contact the Community Area Manager to improve the application with regards to providing evidence that the application would meet certain Performance Reward Grant Scheme criteria.

Councillors suggested Malmesbury Town Council contributed some funding and suggested £30,000. Evidence needed to be provided to support the statements in their application. Questions were raised as to whether the facility was lockable and how it would be managed and maintained.

**Decision**

**To endorse the bid for Performance Reward Grant Scheme funding from Malmesbury Town Council for St Aldhelm's Mead to go forward for consideration.**

**Malmesbury Boxing Club**

Malmesbury Amateur Boxing Club's Headquarters were seeking £20,000 towards a £28,200 project to stop flood damage which results in club closures due to flooding damage. The project would raise their building by 1.3 metres in order to provide flooding protection and would replace/reinstall equipment and paint external walls. After the Malmesbury Area Board meeting on 7 July 2010, the Councillors visited the Malmesbury Amateur Boxing Club's Headquarters. Councillor Soden commented that while the club was clearly doing good work, its facilities could be made more welcoming and inclusive, particularly to young females and disabled individuals looking to take up boxing.

Councillors suggested that if they were to be fully inclusive and encourage young women to join the club, that toilet and showering facilities needed to be improved and disabled access should be considered. Since the Town Council owned the property, Councillors suggested that the applicant should also contact the Town Council for funding.

**Decision**

**To endorse the bid for Performance Reward Grant Scheme funding from Malmesbury Amateur Boxing Club to go forward for consideration.**

**Eilmer Bridge**

Gloucester Road Community Group were seeking £58,580 to build a memorial bridge linking Brooky Lane with the Old Station Yard

Car Park. This project would (primarily) provide easy access for local residents of the Westport area of Malmesbury to the available parking in the long stay car park in Old Station Yard so reducing the current car parking/congestion difficulties in the Westport area. The Area Board expressed concern about the relatively high cost of lighting for the project and its maintenance. The meeting was assured the preferred local contractor had a type of build that would meet the requirement from highways for the bridge to have a 125 year maintenance free period to be adopted by Wiltshire Council.

Councillors applauded the thoroughness of this community application. Concerns were expressed about the high costs of lighting and it was suggested that further discussion with the planning department might be helpful.

**Decision**

**To endorse the bid for Performance Reward Grant Scheme funding from Gloucester Road Community Group to go forward for consideration.**

**Wiltshire Is Saving Energy (WISE) Initiative**

Councillors were asked to consider an expression of interest received by all 18 Area Boards from the Wiltshire Climate Change Officer seeking £12,566 towards energy monitors available for free hire in all libraries across Wiltshire.

The energy monitor allows the user to see clearly how much energy their appliances use and how their behaviour impacts on their energy use. The householder/user can then make simple changes to their behaviour to reduce their energy consumption. Reducing energy will save money off their energy bills and reduce their carbon footprint.

**Decision**

**To endorse the bid for Performance Reward Grant Scheme funding from the Wiltshire Climate Change Officer for the Wiltshire Is Saving Energy (WISE) initiative to go forward for consideration.**

**Wiltshire Voices Initiative**

Councillors were asked to approve a Wiltshire Voices initiative aiming to involve more of the hard to reach groups in the Malmesbury Area Board process. This was a county wide bid going to all 18 Area Boards.

**Decision**

**To endorse the bid for Performance Reward Grant Scheme funding for the Wiltshire Voices initiative.**

16.	<p><u>Evaluation and Close</u></p> <p>The Chairman then invited those present to indicate their views about the meeting, by means of the electronic voting handsets provided. Overall the meeting was judged to be very good.</p>	



## **Malmesbury Area Board 10 November 2010**

### **Mobile Phone Safety**

Immobilise, the UK national property register, are running a scheme to help protect your mobile phone and other property in the future. Please visit their website, [www.immobilise.com](http://www.immobilise.com), to register your mobile phone for free. This will help Wiltshire Police to recover your property and to catch the thief. If you would like a poster to display or further information about this scheme, please see the Immobilise website.

### **Awards for Local Volunteers**

I am delighted to inform you that two local volunteers from the Malmesbury community area won awards at the first VCS (Voluntary and Community Sector) Awards ceremony, organised by Wiltshire Council with NHS Wiltshire last month.

The purpose of the awards was to recognise and celebrate people who have worked on exceptional or innovative schemes that help to transform the lives of people in the county.

The local winners were:

**Community leadership:** David Sheppard.

David is secretary and chair of Ashton Keynes Village Hall and he has been on the committee since 1987. His volunteer work has ensured the village hall now holds the Hallmark quality status award one and two and he has organised the booking system so that it can now be carried out electronically. He has also set up a website for both the village and the hall, is a member of the local school's PTA and has organised the local annual fireworks display since 1981.

**Volunteer of the year:** Iona Pinchis

Iona was a carer before she retired and she continues to help people in the community. Her voluntary work includes shopping, collecting medication, cooking lunches and arranging trips for people and fundraising for local groups. Many people rely on her help and one elderly lady would not be able to remain in her own home without Iona's dedication.

### **Best community initiative nominated by an Area Board.**

An additional award was voted on by members of the audience, who were asked to decide which project they wanted to see win the best community initiative nominated by an Area Board. I am delighted that Malmesbury Youth Development Centre Skate Park steering group came second.

### **Community Area Network (CAN)**

Over the last year or so contact details have been collected at meetings to enable local people to be contacted with electronic information about the Area Board and associated activities. Those with only a postal address were contacted in the summer to request an email address if they had it and provided with details as to where paper copies of information about the Area Board could be found. In addition some of the email addresses have either been illegible when provided and so do not work or over time addresses are changed and we are not told. As a result many people who perhaps have requested information do not receive it. If you do not receive information about the Area Board, through the Malmesbury Community Area Network (CAN) or the 'Just a Minute', the 'easy read' version of the Area Board minutes, please send your email details to the Malmesbury Community Area Manager, Miranda Gilmour [Miranda.gilmour@wiltshire.gov.uk](mailto:Miranda.gilmour@wiltshire.gov.uk)

### **Capacity of the Activity Zone, Malmesbury**

Following a question at the Malmesbury Area Board meeting on the 15th September, Wiltshire Council leisure representatives have discussed the capacity levels of the Activity Zone with the operator DC Leisure Management Ltd (DCL) and we can report that the facility is operating within comfortable capacity limits and that there is sufficient spare capacity to cater for growth in all areas of the business. This translates as between approximately 20-25% growth in the fitness area, 25% growth in swimming and around 15% capacity is left available for casual sports hall activities. In addition there is significant capacity in squash as this sport has seen a national decline in usage over the past few years.

The Council's view is in strategic planning terms this represents an acceptable level of usage as there is sufficient capacity for growth when considering future demographic fluctuations but the figures also demonstrate how well used the facility is.

## **Adverse Winter Weather – Call for Partnership Working**

Wiltshire Council is looking to expand its partnership working with the city, town and parish councils should problems be caused by adverse winter conditions.

Wiltshire Council is encouraging local Councils to record their interest in working with us to help provide services during adverse weather conditions. This could involve being a local agent for storing salt, or refilling salt bins, or mechanical salting of footpaths and roads.

This partnership working will help us jointly to provide a better and more extensive coverage at a time when resources will be fully stretched.

The local councils are asked to register their interest via their Community Area Manager before 30 November 2010.

## **Help Tomorrow Take Shape – The 2011 Census**

The 2011 Census is coming:

- The census has collected information about the population every ten years since 1801 (except in 1941). The next census in England and Wales is on 27th March 2011
- The 2011 Census will produce a high quality estimate of the population. It is a count of the people and households in England and Wales. The census is carried out by the Office for National Statistics (ONS) on behalf of Parliament
- Everyone is asked the same questions in order to take a snapshot of the population at one moment in time
- The census tells us how many people live where and the types of people they are, for example whether they are young, old, married, single, etc. This means decisions, like working out who needs facilities in the future, are focused on accurate, relevant details
- You can find out all general information about the census at [www.census.gov.uk](http://www.census.gov.uk)

The 2011 Census is vitally important for Wiltshire and its communities:

- Census data is used to ensure that all the required local facilities and services needed across Wiltshire can be accurately identified
- Central funding allocation for Wiltshire is heavily influenced by the census data – it is estimated that Wiltshire Council will potentially lose around £500 per person per year for 10 years for every person not counted

What Wiltshire Council and ONS would like local councils to do:

- Publicise and promote the 2011 Census in your community
- Use your expert local knowledge to let us know about potential areas that may be hard to count in your community such as travellers, communes, religious establishments, migrant workers for example
- Promote locally that there are around 250 Census jobs being created across Wiltshire in 2011 and, as well as getting paid, that this is a great opportunity for knowledgeable local people to be part of something that will benefit their

community. You can find out more information and apply for all available jobs at [www.censusjobs.co.uk](http://www.censusjobs.co.uk).



# Wiltshire Fire & Rescue Service

Wiltshire and Swindon Fire Authority

## Report for Malmesbury Area Board - October 2010

### Fires

WFRS attended 8 accidental fires during the months of July and August 2010 including a microwave, a pile of logs, 2 unattended bonfires, a tractor, vegetation on the forest floor, recycling machinery and wood chippings, and a field fire on farm land.

We were also called to 11 deliberate fires over the same period involving bonfires, a 4x4 vehicle, fencing, several unattended bonfires and a spate of wheelie bin fires. There seems to be an increase in unattended bonfires which are marked as deliberate and the Wheelie bin fires occurred on the same night. We continue to try and identify those responsible in conjunction with the police.

### Injuries

No injuries through any fire related incidents have occurred during July and August 2010.

### RTC'S

WFRS attended 5 Road Traffic Collisions within the Boards area - 2 injuries were reported.

### Co-Responder Calls

WFRS have responded to 21 co-responder calls over this period.

### Community Safety

Wiltshire Fire & Rescue Service is reminding people about the importance of getting chimneys swept after already being called to a chimney fire in August. The recent chilly weather at night has led to many homes having fires lit much earlier in the year than normal - which can be dangerous if the chimney has not been swept since the fire was last used.

The Service's advice is to ensure that chimneys for wood burning fires are swept every three months when in use. If you burn bituminous coal, the chimney should be cleaned at least twice a year, and at least once a year when burning smokeless coal. An annual clean is sufficient for oil and gas fires. Other tips include:

- Have the chimney properly swept – using a vacuum cleaner alone is not sufficient.
- Make sure your fire receives enough air to allow the fuel to burn properly.
- Only burn suitable fuels.
- Do not overload the grate or appliance.
- Maintain your appliance in accordance with the manufacturer's instructions.
- Use a fire or spark guard to prevent accidental fires.
- Inspect your chimney breast, particularly in the roof space. Make sure that it is sound and that the sparks or fumes cannot escape through cracks or broken bricks.
- Make sure you are not at risk from carbon monoxide poisoning by having appliances installed and serviced by competent engineers. Fit a carbon monoxide detector and never block air bricks, vents or flues.
- Extinguish the fire before going to bed or leaving the house.

A wide range of fire safety advice can be found on the Wiltshire Fire & Rescue Service website - [www.wiltsfire.gov.uk](http://www.wiltsfire.gov.uk)







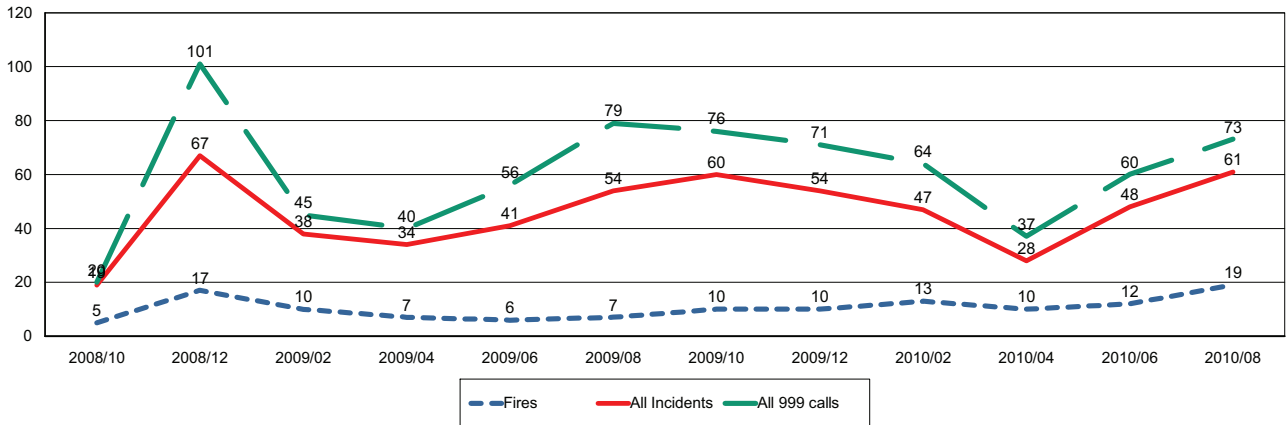
# Wiltshire Fire & Rescue Service

Wiltshire and Swindon Fire Authority

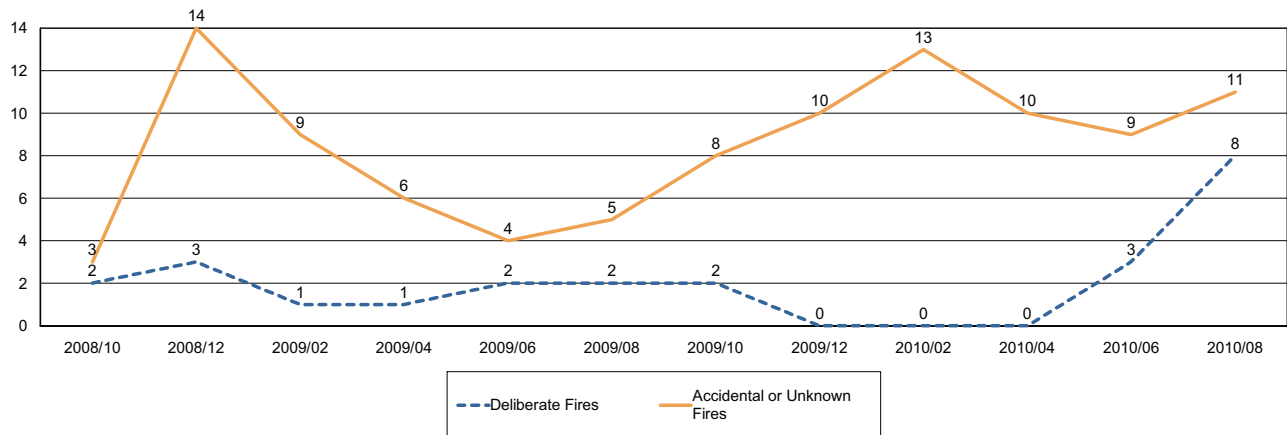
## Report for Malmesbury Area Board

The following is a bi-monthly update of Fire and Rescue Service activity up to and including August 2010. It has been prepared by the Group Manager for the Board's area.

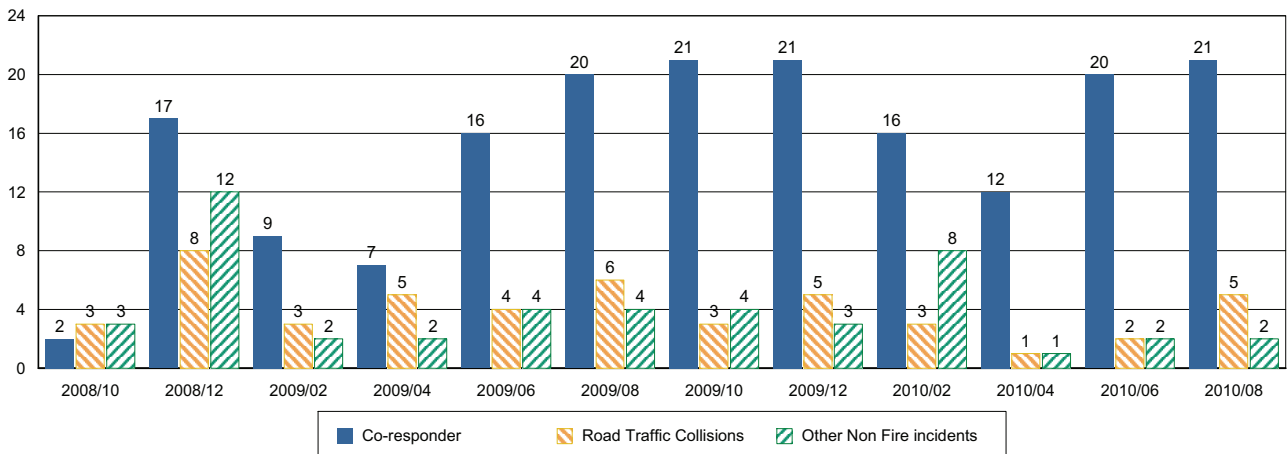
### Incidents and Calls



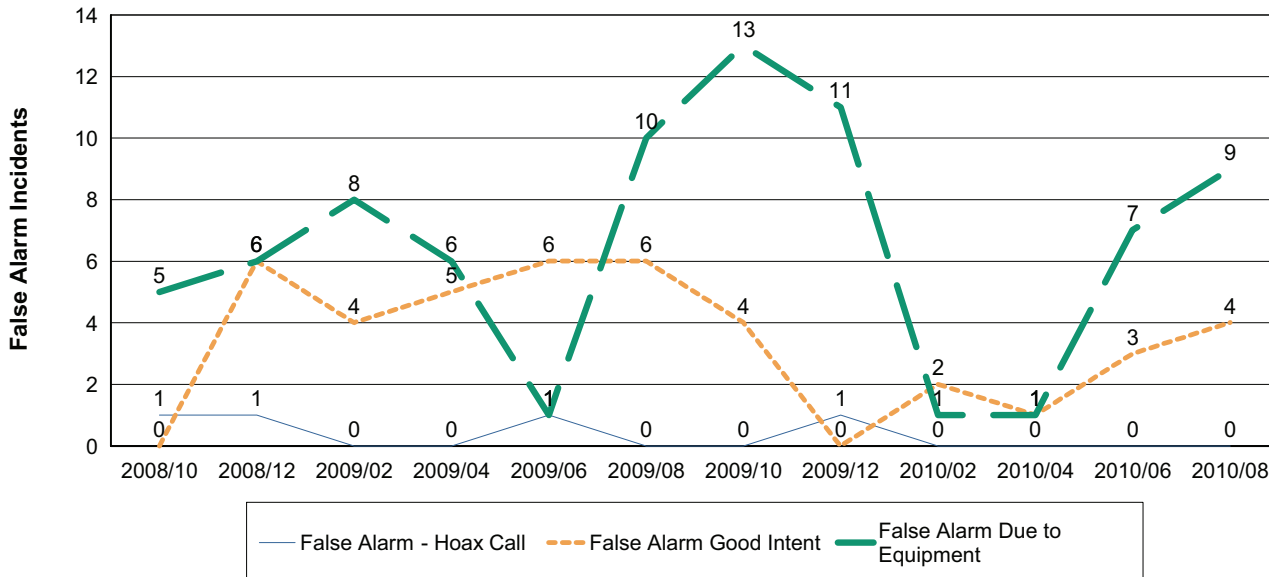
### Fires by Cause



### Non-Fire incidents attended by WFRS



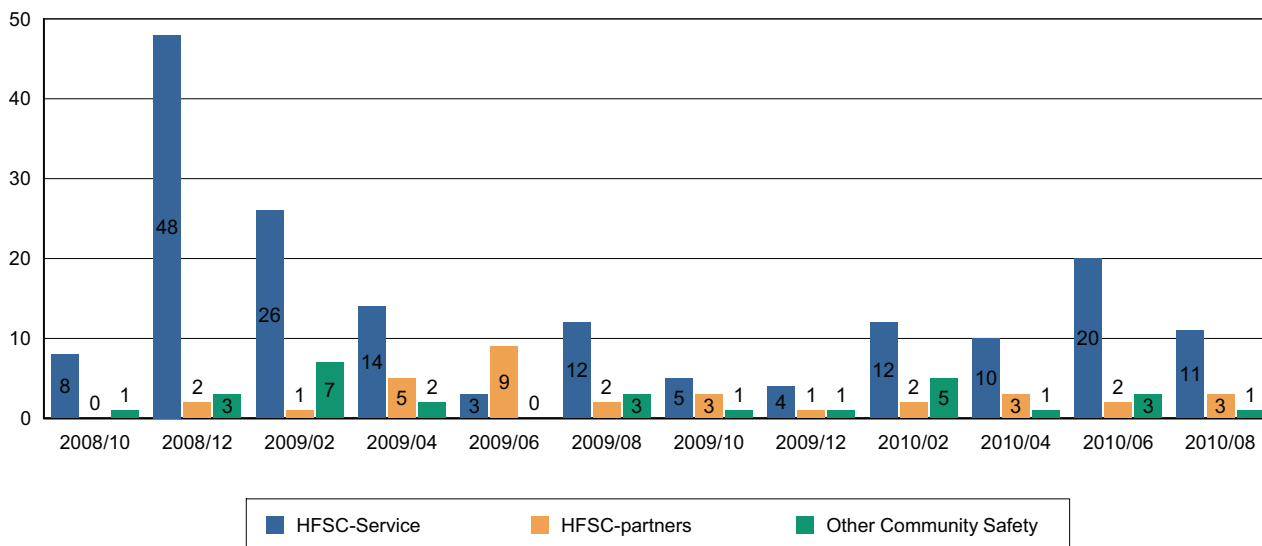
### Number of False Alarm Incidents



### Death & Injuries in incidents attended by WFRS



### Home Fire Safety Checks and other domestic safety



Comments and Interventions overleaf

## NHS Update – November 2010

### Re-appointment of NHS Wiltshire Chair

Tony Barron has been re-appointed to serve as Chair on the PCT board from 1 January 2011 until 31 December 2014. The appointment has been made in accordance with the OPCA Code of Practice.

### Comprehensive Spending Review

Everyone working in the NHS is acutely aware of the need to make our budgets go further in the future. Nationally, the NHS is required to make £20bn savings per annum over the next three years, and the money will be reinvested back into patient care. We are working closely with our local partners to think carefully about how we can play our part in that process by delivering care differently in the years ahead so that we can reduce costs and improve quality.

### Consultation Documents

The Secretary of State for Health, Andrew Lansley, has published two further consultation documents seeking views on proposals set out in the White Paper, *Equity and Excellence: Liberating the NHS*

“Liberating the NHS: Greater choice and control – A consultation on proposals” and “Liberating the NHS: An Information Revolution - A consultation on proposals”. The documents are available electronically at [www.dh.gov.uk/liberatingtheNHS](http://www.dh.gov.uk/liberatingtheNHS)

“Liberating the NHS: Greater choice and control – A consultation on proposals” envisage choice of treatment and healthcare provider becoming the reality in the vast majority of NHS funded services by no later than 2013-14.

The second consultation “*Liberating the NHS: An Information Revolution - A consultation on proposals*” is about transforming the way information is, collected, analysed controlled and used in NHS and adult social care services.

These consultations are opportunities to seek the views of patients, the wider public and the NHS, about the challenges that lie ahead, how we can successfully address them, and how we best take forward the choice and information commitments.

The consultation period for both documents will close on 14 January 2011 and we encourage anyone interested to contribute.

### Staying healthy this winter

The NHS is gearing up for its busiest season of the year. Common viruses such as flu and the ‘winter vomiting’ bug, norovirus, often take hold just as the cold weather starts to bite, causing extra challenges to our health services. One of the

biggest problems is keeping viruses from spreading, and NHS Wiltshire is asking people who may be infectious to **stay at home and use the phone**.

### **Flu vaccinations**

GP practices around the county have started running flu vaccination clinics. This year the vaccine contains protection against H1N1 (no longer considered a pandemic, but one of this season's predominant strains of flu) as well as other strains of the virus. One simple injection should provide complete protection, and we're urging anyone who hasn't already been vaccinated to contact their GP.

### **Norovirus – stopping the spread**

The 'winter vomiting bug' Norovirus caused serious disruption in hospitals across the southwest last winter, and NHS Wiltshire, together with our hospital colleagues, is urging everyone to play their part in preventing the spread of this distressing illness as this year's winter season looms.

We are all asking anyone who has had vomiting or diarrhoea in the last 48 hours not to visit friends or relatives in hospital or in a care home.

If you do have diarrhoea and/or vomiting, the advice is also to ring your GP's surgery if you have any concerns – and NOT to go to the surgery. The triage nurse or GP on call can tell you over the phone if you need to be seen – in cases where the patient is a child, for instance, or has another medical condition that could lead to vomiting – and this will avoid bugs spreading through busy waiting rooms.

Apart from hospitals, schools are one of the main breeding-grounds for vomiting and other bugs. If your child vomits or has diarrhoea, it is vital to keep them away from school for a full 24 hours from the last attack.

Finally, as norovirus is extremely infectious, keeping hard surfaces clean and washing hands thoroughly is very important. More detail on norovirus is available from the [Health Protection Agency](#).

### **NHS Stop Smoking Walk-in Clinic for Devizes**

NHS Wiltshire have opened a new Stop Smoking Walk-in Clinic in Devizes in order to meet the increasing demand for people wanting to quit.

The Devizes Stop Smoking Clinic will run as a "walk-in" clinic every Tuesday between 1.30pm and 3pm in the Outpatients Clinic at Devizes Hospital.

There is no need for people to make an appointment, people can simply call in, and they will be seen by a Specialist NHS Advisor.

### **Win for Wiltshire in health awards**

NHS Wiltshire's Head of Primary Care, Jo Cullen has won a regional award for leading the team which brought about a new, single out-of-hours GP service for the whole of Wiltshire.

### **Beds have reopened at Savernake Hospital**

All 24 inpatient beds at Savernake Hospital have re-opened.

The Annual General Meeting and Board meeting of NHS Wiltshire will be held on Wednesday 17 November at 10am - **2010 at Southgate House**. Members of the public are welcome to attend.

Papers are published a week before the meeting on [www.wiltshire.nhs.uk](http://www.wiltshire.nhs.uk) or on request from Stacey Saunders, NHS Wiltshire (tel: 01380 733839, email: [stacey.saunders@wiltshire.nhs.uk](mailto:stacey.saunders@wiltshire.nhs.uk)). For further information or copies of documents referred to above, please contact Jo Howes, Community Engagement Manager, 01380 733929 or [jo.howes@wiltshire.nhs](mailto:jo.howes@wiltshire.nhs)



## **Update From: Malmesbury and the Villages Community Area Partnership. (M&VCAP)**

**Date of Area Board Meeting: 10<sup>th</sup> November 2010**

### **Headlines**

Project Officer - Mark Allen who is an active member of the group has been appointed as the Project Officer. Mark is also taking control of the website which is receiving good reviews.

“Transport for You Event” 8<sup>th</sup> September 2010. This proved to be very successful attended by 44 public plus members of other organisations. There were a variety of exhibits and the speakers’ subjects were found to be interesting and useful. Various transport concerns were raised and those responsible took these back to their base for consideration.

Petticoat Lane Stall - This again proved to be worthwhile. Over £60 was raised for charity as well as spreading the word on MVCAP.

Safety Forum 30<sup>th</sup> September 2010 - Held in Sherston Village Hall. 32 members of the public attended together with representatives of the Police, Neighborhood Watch and Westlea Housing Association. Reports were given on the police priorities and the Neighborhood Watch Team gave an insight to their priority plans. Rural Farm Watch proved to be an interesting subject to many present.

The 6 monthly meeting with the Area Board was held on the 12<sup>th</sup> October. An update on the Action Plan was given and certain points were mentioned that MVCAP agreed to take on board.

### **Issues/Projects**

CCTV Report given 28<sup>th</sup> September - All cameras are now operating. Awaiting the documents to be signed over by the police. There are 4 volunteers who have completed the police Baseline Personnel Security Forms. Once paperwork is completed then Brio Technologies will move the monitoring and recording equipment from the Town Hall.

Reduced Street Lighting. - M&VCAP have formed a team to lead the reduced street lighting consultation. Mark Allen is co-coordinating this project. Parish response has been positive. All is working within the time scale.

Speed Bump Survey for Malmesbury has been undertaken jointly by Malmesbury Town Council and MVCAP. Questionnaires are being collated and results will be presented to the Area Board when the report is complete.

Engaging with Parish Councils – Tony Pooley has joined the Steering Group and will be liaising with the Parish Councils.

Communication - MVCAP have gained some good PR lately. Publicity has much improved. A Facebook page has been set up and is gaining members.

### **Future Events/Dates for the Diary:**

The following issues are to be considered by MVCAP for future events - Joint Housing and Environment

### **Calendar of Meetings:**

Steering Group:- Monday 15<sup>th</sup> November, Tuesday 14<sup>th</sup> December. The meetings will be held at 7.00pm in the Orangery, Kings Arms, Malmesbury, unless otherwise notified.

Community Safety Meetings: - January 6<sup>th</sup>. 2011 Malmesbury Town Hall.

Themed Events - TBA

A handwritten signature in black ink, appearing to read 'S. Webb'.

Co-coordinator/Administrator for M&VCAP

Dated: 28<sup>th</sup> October 2010



<b>Report to</b>	<b>Malmesbury Area Board</b>
<b>Date of Meeting</b>	<b>10 November 2010</b>
<b>Title of Report</b>	<b>Malmesbury Community Issues Update</b>

## **Purpose of Report**

To provide a Community Issues update and invite members of the Area Board to:

1. Close 7 issues.
2. Consider 3 car parking issues at the November area board under the car parking strategy consultation item.
3. Consider 5 issues previously considered by local Transport Plan Allocation Group at the 19 January Area Board.
4. Note that 4 issues are being addressed through highways maintenance and 2 will be considered on receipt of the speed bumps survey to the January 2011 Area Board.

## 1. Background

- 1.1. At the time of writing (27 October 2010), a total of 63 community issues have been received, of which 36 have been closed and 27 are in progress. There are currently no new requests.

<b>Background documents used in the preparation of this Report</b>	Malmesbury community issues online at: <a href="http://www.wiltshire.gov.uk/communityandliving/areaboards.htm">http://www.wiltshire.gov.uk/communityandliving/areaboards.htm</a>
--	---

## 2. Main Considerations & Officer Recommendations

### 2.1. Closure of Issues

- 2.1.1. Members are invited to close the following 6 issues (emboldened in Appendix 1)
- 2.1.2. **Issue 426** – the parish council accept that there is insufficient support from local people to adopt Community Speedwatch and that the issue should be closed.
- 2.1.3. **Issues 609, 762, 882 and 947** – Malmesbury, Malmesbury St Paul Without, and Great Somerford parish councils have agreed to adopt Community Speedwatch and the police are currently checking sites and supporting training.
- 2.1.4. **Issue 1132** – inspection of the cobbled footpath has shown it is in good repair and there is no need for change.
- 2.1.5. **Issue 1310** – the drain is responsibility of the landowner and advice has been provided

### 2.2. Issues for consideration at 10 November area board

- 2.2.1. Issues **1226, 406 and 655** will be considered on 10 November as part of the council's parking strategy consultation feedback.

### 2.3. Issues considered by the Local Transport Plan Allocation Group

- 2.3.1. The Local Transport Plan Allocation Group (a sub-group of the area board) met on 28 September. The group was made up from Wiltshire councillors, a parish representative from the four electoral divisions (one of whom also represented the Malmesbury & Villages) and transport officers. The purpose was to decide which schemes should be recommended to the area board for funding, identify where further funding might be found and where further research was required before a decision was made by the area board.
- 2.3.2. A total of £13,360 is available to support schemes that improve safety, increase accessibility and sustainability by promoting walking, cycling and public transport; and improve traffic management. This funding was not for maintenance issues.
- 2.3.3. Issues discussed by this group included **334, 562, 620, 1134 and 1202** in addition to others received by transport officers. A decision about which schemes to fund

will be considered by the 19 January 2011 area board.

#### 2.4. Malmesbury Traffic Calming and other highways measures

2.4.1. Issues **438 and 440** are associated with the joint survey by Malmesbury Town Council and Malmesbury & Villages Community Area Partnership relating to the speed bumps in town, and other highways issues. The results will be considered at the 19 January 2011 Area Board.

2.4.2. Road maintenance issues **273, 430, 440 and 637** will largely be picked up within the maintenance schedules already discussed.

### 3. **Environmental & Community Implications**

3.1. Addressing community issues contribute to the improvement of community wellbeing in the area, the extent and specifics of which will be dependent upon the individual issue.

### 4. **Financial Implications**

4.1. There are no specific financial implications related to this report.

### 5. **Legal Implications**

5.1. There are no specific Legal implications related to this report.

### 6. **HR Implications**

6.1. There are no specific HR implications related to this report.

### 7. **Equality and Inclusion Implications**

7.1 The opportunity to raise Community Issues enables individuals, voluntary and community groups, town and parish councils an equal opportunity to identify and seek assistance to address problematic issues.

<b>Appendices:</b>	<b>Appendix 1 - Malmesbury Area Board Community Issues – Progress Table</b>
--------------------	---

No unpublished documents have been relied upon in the preparation of this report.

<b>Report Author</b>	Miranda Gilmour, Community Area Manager Tel: 01672 515742 Mobile:07990 505882 E-mail: <a href="mailto:miranda.gilmour@wiltshire.gov.uk">miranda.gilmour@wiltshire.gov.uk</a>
----------------------	---



**Malmesbury Area Board Issues - Progress Table**

<b>ID</b>	<b>Category</b>	<b>Division</b>	<b>Summary of Issue</b>	<b>Status</b>
406	Car Parking	Malmesbury	Residents Parking in Malmesbury	Cllr Dick Tonge and officers to attend the 10 November 2010 Area Board to provide feedback on the parking strategy consultation. This will indicate whether there is sufficient interest in Malmesbury to pursue a residents parking scheme. .
655	Car Parking	Malmesbury	St Josephs seek parking permits for Cross Hayes	The Local Transport Plan Car Parking Strategy public consultation will take place between 12 July and 3 September 2010, when this issue can be voiced. The preferred method of communication is for comments to be submitted on line at <a href="http://consult.wiltshire.gov.uk/portal">http://consult.wiltshire.gov.uk/portal</a> . A reference copy of the report will also be available from the library. Cllr Dick Tonge and Chris Major will attend the 10 November Area Board to provide feedback on the parking strategy consultation.
1074	Car Parking	Malmesbury	Access to car parking by Glovers Courts residents	I am advised that Wiltshire council has no authority on private land and this is a matter for Westlea to address and will be forwarded to them for their attention.
1226	Car Parking	Malmesbury	Enable car parking on grass on corner of Burnham/Hudson Road	There is nothing that can be done at present as the policy on conversion of grass areas for parking is in the parking policy document which (following public consultation) will be considered by Cabinet later this year.
273	Highways	Malmesbury	Poor condition of roads in Malmesbury	Repairs to the road surface on town hill (High Street) are planned to be undertaken shortly. Feedback from Town Council/M&VCAP speed bump survey is awaited.
334	Highways	Minety	Safety at North End Crossroads, Ashton Keynes	Briefly discussed at the Local Transport Allocation Group - a sub-group of the Malmesbury Area Board and further consideration being undertaken. Recommendations of this sub-group will be considered by

				the 19 January 2011 Area Board.
426	Highways	Minety	Speeding traffic in Minety	<b>Chairman of Parish Council has indicated that there is insufficient support from local people to volunteer to operate a Community Speedwatch Scheme in the Village so for the time being this issue could be closed. It is suggested that the Parish Council may want to consider re-positioning their SID, (details of which were sent in the summer), which might help the situation. This should be done via the Parish Steward. This issue will be recommended for closure at the November 2010 Area Board.</b>
430	Highways	Malmesbury	Poor road conditions in Malmesbury	Various repairs to the road surfaces in the town are planned to be undertaken shortly.
438	Highways	Malmesbury	Remove or replace speed bumps in the town	Survey results to be considered by Area Board on 19 January 2011
440	Highways	Malmesbury	Disabled Access in Malmesbury	Access in the town forms part of a joint survey by Malmesbury Town Council and Malmesbury & the Villages Community Area Partnership. This survey has just been launched and will be available on-line and in paper version until 1 October 2010, with results being presented to the Area Board in January 2011.
562	Highways	Malmesbury	Crossing needed on Tetbury Hill Road near Filands.	This issue was consideration 28 September by the Local Transport Plan Allocation Group. More research was requested on this and other issues and a decision would be made at the 19 January 2011 Area Board
609	Highways	Malmesbury	<b>Concerns about speeding traffic in Malmesbury</b>	<b>Referred to Community Speedwatch</b>
620	Highways	Brinkworth	Footpath required in Dauntsey	Malmesbury Area Board met on 28 September. Further investigative work is being undertaken on a range of items considered by this group and a decision Will be made at 19 January 2011 Area Board
637	Highways	Malmesbury	Poor state of the roads in Malmesbury	Various repairs to the road surfaces in the town are planned to be undertaken shortly.

656	Highways	Malmesbury	Safe Routes to St Joseph's school	The Councils School Travel Plan Adviser contacted the Head teacher at the end of September 2010, who seems agreeable to making a revised bid for Taking Action on School Journeys funding to include the crossing. The forms went out to school at the end of September and need to be returned by the end of term in December.
762	Highways	Sherston	HGV, speeding and lack of crossing in Corston	<b>Parish Council pleased to adopt Community Speedwatch and local volunteers willing to lead/participate. Police checking safety of monitoring sites and training being established. Referred to Community Speedwatch</b>
882	Highways	Malmesbury	Concerns about speeding in Corston	<b>Parish Council pleased to adopt Community Speedwatch and local volunteers willing to lead/participate. Police checking safety of monitoring sites and training being established. Referred to Community Speedwatch</b>
906	Highways	Brinkworth	Poor condition of unclassified road between Lea - Cleverton	Forwarded to Council officers for response.
947	Highways	Brinkworth	Speeding traffic through Startley	<b>Referred to Community Speedwatch</b>
1129	Highways	Minety	Speeding vehicles in Leigh on B4040	No recent police speed checks but they feel metro count would be a good idea. Contacted petitioner requesting suitable position for metro count to be laid.
1132	Highways	Malmesbury	Unsafe pavement at entrance to George Veterinary Surgery, Malmesbury	<b>An inspection of the footway has been carried out by a highway officer. The footway is cobbled, forming an old access into a private property. These cobbles are a feature of the street scene of the historic town. They are in good repair. i.e. no defects found, so there will be no changes made at this time.</b>
1133	Highways	Malmesbury	Damaged footpath on A429 opposite Malmesbury health centre	The footway at the junction of Arches Lane (assuming this is where the petitioner is referring to) is in good condition. There is, however, undulation caused by tree roots of a very old and established tree from

				the private property adjacent. The highways department will carry out an excavation to establish whether they are able to remove material under the surface of the footway to try to level the footway without cutting tree roots. However, if there are essential tree roots here that prevent them from making the footway level, they will not be able to cut into them without placing the trees stability at question.
1134	Highways	Malmesbury	Perceived speeding approaching zebra crossing by Health Centre	The issue was discussed at the Local Transport Allocation group - a sub-group of the Malmesbury Area Board and improvements to the crossing considered. Recommendations of this sub-group will be considered by the 19 January 2011 Area Board.
1135	Highways	Brinkworth	Poor pavement - Lea village hall , north to The Street	Highways engineers at the Area Office discussed this with the parish clerk last year when this pavement was placed on a list of foot ways requiring major maintenance treatment and was submitted earlier this year to County Hall for consideration for major maintenance when sufficient funding is available. The Area Office will continue to submit this pavement for consideration each financial year until it is approved by County Hall for treatment. It is prioritised with other pavements in the County requiring similar or same treatment but unfortunately funding each year is limited and this year is no exception. .
1202	Highways	Minety	Rectify pavement at Swann Close in line with planning approval	This issue was discussed by the Local Transport Plan Allocation Group, a sub-group of the Area Board, when they met on 28 September. Costings are being undertaken and recommendations will be brought to the 19 January 2011 Area Board.
<b>1310</b>	<b>Highways</b>	<b>Malmesbury</b>	<b>Blocked drain/ gully at the Pines, Malmesbury.</b>	<b>This issue relates to a problem on private land and not a matter for the council. Advice has been provided to resolve the problem.</b>
1270	Transport	Malmesbury	Re site Park Road east bound bus stop	This matter is being considered by officers in the council. Funding for 2010/11 has already been allocated, but it could be added to the 2011/12 list for consideration (assuming there will be funding allocated next year)



<b>Report to</b>	<b>Malmesbury Area Board</b>
<b>Date of Meeting</b>	<b>10 November 2010</b>
<b>Title of Report</b>	<b>Area Board Funding</b>

## **Purpose of Report**

To ask councillors to consider 3 applications seeking 2010/11 Area Board Grants and the following officer recommendations:

1. Oaksey Parish Council - award £600 towards the cost of a replacement notice board, conditional on the balance of funding being in place.
2. Athelstan Players – award £746 to replace fascia boards and undertake repairs to guttering and downpipes at the Athelstan Players Studio, conditional on the balance of funding being in place.
3. 1st Sherston Scout Group – either award £3,319 towards the cost of flooring, security and electrical and water heating at the scout headquarters, conditional on the balance of the funding for the whole project being in place; or defer a decision until the applicant has worked with Charities Information Bureau to re-submit a more robust application.

To ask councillors to approve the cost of installing a speed detection radar device in Ashton Keynes at a cost of £353 to enable monitoring to be undertaken associated with the Local Transport Allocation project

To ask councillors to endorse their decision made since the last meeting, to allocate £45 to provide a council caravan for use at the Malmesbury stroke awareness event on 30 October 2010.

To ask councillors to delegate authority to the Community Area Manager, in consultation with the area board councillors, to approve expenditure between meetings.

## 1. Background

- 1.1. Area Boards have authority to approve Area Grants under powers delegated to them by the Deputy Leader and Cabinet member for Community Services (27 February 2010). Under the Scheme of Delegation Area Boards must adhere to the Area Board Grants Guidance for funding.
- 1.2. In accordance with the Scheme of Delegation, any recommendation of an Area Board that is contrary to the funding criteria would need the approval of the Leader, appropriate Cabinet Member or the Cabinet.
- 1.3. In accordance with the Area Board Grants Guidance officers are required to provide recommendations in their report, however, the decision to support applications and to what level is made by Wiltshire Councillors on this Area Board.
- 1.4. Funding applications will be considered at every Area Board meeting.
- 1.5. During 2010/2011 all applicants are being encouraged to contact Charities Information Bureau who is working on behalf of Wiltshire Council to support community and voluntary groups, town and parish councils to seek funding for community projects and schemes both from the Area Board and other local and national funding sources.
- 1.6. A decision has been made in 2010/2011 that paper copies of funding applications will no longer appear as part of the agenda in an attempt to reduce volume of paper used. However, the application forms will be available on the Wiltshire Council web site and hard copies available upon request.
- 1.7. The 2010/2011 funding criteria and application forms are available on the council's website ([www.wiltshire.gov.uk/areaboards](http://www.wiltshire.gov.uk/areaboards)) or paper versions are available from the Community Area Manager.

<b>Background documents used in the preparation of this Report</b>	<ul style="list-style-type: none"><li>• Community Area Grant Application Pack 20010/11</li><li>• How you view where you live - Malmesbury &amp; the Villages Community Plan 2009-2013</li></ul>
--	---

## 2. Main Considerations

- 2.1. Malmesbury Area Board was allocated a 2010/2011 budget of £40,593 for community grants, community partnership core funding and councillor led initiatives. The carry forward from the 2009/2010 budget was £682, resulting in a balance of £41,275.

- 2.2. At the 12 May area board, funding totalling £4,230 was distributed, leaving a balance of £37,045.
- 2.3. At the 7 July area board community area grants totalling £4,420 was approved, leaving a balance of £32,625.
- 2.4. The Area Board on 12 May 2010 agreed to fund £3,000 to the Malmesbury and the Villages Community Area Plan.
- 2.5. The Area Board agreed on 7 July 2010 to match fund the transport and young people project funding allocated by Cabinet by £4,000.
- 2.6. At the 15 September area board community area grants totalling £2,453 was approved, leaving a balance of £23,172.
- 2.7. Councillors will need to be satisfied that grants awarded in the 2010/11 year are made to projects that can realistically proceed within a year of the award being made.
- 2.8. There are 6 funding rounds during 20010/11. The forth is contained in this report the remaining will take place on:
  - 19 January 2011
  - 16 March 2011
- 2.9. The deadline for receipt of funding applications for consideration at 19 January 2011 Area Board is 30 November 2010.

### **3. Environmental & Community Implications**

- 3.1. Community Area Grants will contribute to the continuance and/or improvement of cultural, social and community activity and wellbeing in the community area, the extent and specifics of which will be dependent upon the individual project.

### **4. Financial Implications**

- 4.1. Awards must fall within the Area Boards budget allocated to the Malmesbury Area Board.
- 4.2. If grants are awarded in line with officer recommendations, Malmesbury Area Board will have a balance of either £18,109 or £21,428 (depending on the decision made in respect to 1<sup>st</sup> Sherston Scout Group)

### **5. Legal Implications**

- 5.1. There are no specific Legal implications related to this report.

## 6. HR Implications

- 6.1. There are no specific HR implications related to this report.

## 7. Equality and Inclusion Implications

- 7.1. Community Area Grants give all local community and voluntary groups, Town and Parish Councils an equal opportunity to receive funding towards community based projects and schemes.
- 7.2. Implications relating to individual grant applications are outlined within section 8 – “Officer Recommendations”.

## 8. Officer Recommendations

Ref	Applicant	Project proposal	Funding requested
8.1	Oaksey Parish Council	Replacement notice board	£600

- 8.1.1. Officers recommend that Oaksey Parish Council is awarded £600 towards the cost of providing a replacement notice board, conditional on the balance of funding being in place.
- 8.1.2. Officers are of the opinion that this application meets the 2010/11 grant criteria.
- 8.1.3. There is an implied reference within the Malmesbury & Villages Community Plan 2009-2013, to improve communication, since this is at the heart of community engagement.
- 8.1.4. The applicant is willing to contribute 50% of the total cost of the board and they are also using volunteers to install it.
- 8.1.5. The parish council does hold reserves, however these are being built up to allow for refurbishment and/or replacement play equipment and other community projects
- 8.1.6. The aim is to both provide a larger board, while replacing an old one which is not waterproof and is difficult to access. The intention is to be able to display parish, area board and other information from statutory agencies as well as that from the voluntary organisations, including Malmesbury & Villages Community Area Partnership. The notice board will be erected in the village hall car park and as a result will be readily accessible to local residents.

8.1.7. It is acknowledged by the applicant that the cost is considerable, but experience has shown that cheaper boards have proved to be a poor investment.

8.1.8. A decision not to fund this project is likely to result in the project being delayed until funding is raised from elsewhere.

Ref	Applicant	Project proposal	Funding requested
8.2.	Athelstan Players	Replacement fascia boards and repairs to guttering and downpipes	£746

8.2.1. Officers recommend that Athelstan Players are awarded £746 to replace fascia boards and undertake repairs to guttering and downpipes at the Athelstan Players Studio, conditional on the balance of funding being in place.

8.2.2. Officers are of the opinion that this application meets the 2010/11 grant criteria.

8.2.3. There is some reference to access by adults to cultural activities and young people wanting more entertainment in the Malmesbury & Villages Community Plan 2009-2013. The Athelstan Players, an amateur dramatic group satisfy these needs through membership and provision of local entertainment in the town. Such a club also engenders confidence and sense of community amongst its membership and supporters.

8.2.4. The Studio, adjacent to the Malmesbury football ground is used regularly for rehearsals, storage, meetings and other social events. It currently supports a membership of 30 adults and 20 young people in addition to the hundreds of people who enjoy their productions.

8.2.5. The applicant has approached a number of organisations to seek funding.

8.2.6. While the drama group is self funded through its drama productions, members of the area board may wish to encourage the Athelstan Players to endeavour to build some reserves for future maintenance of their studio.

8.2.7. A decision not to fund this application would lead to a delay in funding while the applicant sought funding from other sources, which may result in damage to items in storage.

Ref	Applicant	Project proposal	Funding requested
8.3.	1 <sup>st</sup> Sherston Scout Group	Flooring, security and electrical and water heating at the scout and guide headquarters.	£3,319

- 8.3.1. 1<sup>st</sup> Sherston Scout Group – either award £3,319 towards the cost of flooring, security and electrical and water heating at the scout headquarters, conditional on the balance of the funding for the whole project being in place; or defer a decision until the applicant has worked with Charities Information Bureau to resubmit a more robust application.
- 8.3.2. Officers are of the opinion that this application only partially meets the 2010/11 grant criteria. The application is made up of multiple projects and officers are of the opinion that the area board should not be funding basic items such as cutlery and toilets brushes.
- 8.3.3. The application demonstrates links to the Malmesbury & Villages Community Plan 2009-2013, in that it provides a centre for activities for the young people who live in the village whether they are members of the scouts, guides or individuals who join in holiday schemes organised by the parish council.
- 8.3.4. Funding from other sources is still to be investigated and yet to be confirmed, so members of the area board may consider the application premature, requiring further support from the Charities Information Bureau.
- 8.3.5. Since this facility appears to be much used by the local community it would be hoped that the parish council could increase its contribution, particularly in respect to the security aspect of the work.
- 8.3.6. Members of the area board may wish to encourage the Scout and Guide HQ to endeavour to build some reserves for future maintenance of their hall.
- 8.3.7. A decision not to fully fund this application will delay the implementation of the project while further funding applications are made with the support of the Charities Information Bureau.
- 8.4. Vehicle Monitoring Device
- 8.4.1. As part of the work being undertaken by the officers and members of the local Transport Allocation Working Group (a sub-group of the area board), a request has been received by officers to undertake some preliminary work associated with monitoring speeds/vehicles in the village.
- 8.4.2. This activity would help to identify the actual problems, before looking at solutions.

8.5. Stroke Awareness and Prevention

8.5.1. A Health Fair was held in Malmesbury in February 2010 and subsequently at the 3 March 2010 area board it was agreed that stroke prevention would be one of the three area board health priorities.

8.5.2. An opportunity arose following the 15 September area board to undertake some promotional work to raise awareness among local people to stroke prevention and recognition of symptoms, linked to World Stroke Day on 30 October.

8.5.3. It was agreed that £45 should be allocated from the area board budget to fund a trailer to enable this project to proceed.

8.6. Delegated authority to the Community Area Manager

8.6.1. In an effort to avoid retrospective endorsement of funding allocation as outlined in section 8.4 of this report, delegated authority to the Community Area Manager is sought :

- Where the funding is needed urgently and the matter cannot wait until the next scheduled area board meeting.
- Funding may only be approved up to a maximum of £500 per decision.
- Decisions taken under this delegated power shall be reported to the next area board meeting.

<b>Appendices</b>	Appendix 1 Grant application – Oaksey Parish Council Appendix 2 Grant application – Athelstan Players Appendix 3 Grant application – 1 <sup>st</sup> Sherston Scout Group
-------------------	---

No unpublished documents have been relied upon in the preparation of this report.

<b>Report Author</b>	Miranda Gilmour, Community Area Manager Tel: 01672 515742 Mobile:07990 505882 E-mail: <a href="mailto:miranda.gilmour@wiltshire.gov.uk">miranda.gilmour@wiltshire.gov.uk</a>
----------------------	---





## Grit bin requests from parishes within the Malmesbury community area

Parish	Number of grit bins	Location
Charlton	1	At Pink Lane /Park Lane Junction
Hankerton	3	(1)Junction with Follyfield and main north-south lane through village (ST969908). (2)Junction with Cloatley Rd and main north-south lane (ST969907). (3)Junction with the single track lane that connects the Hankerton Lane and Charlton's Tetbury Lane (ST968906).
Lea and Cleverton	4	(1)Near Heath Farm near Garston. (2)On C66 opposite Manor farm. (3)Adjacent to the verge to the 2 following sharp bends towards Woodbridge Brook. (4)Opposite the church on the hill at Garsdon
Leigh	1	At the Swan Lane/Hillside junction.
Luckington	3	(1)At Brook End. (2)On Church St opposite the church. (3)At Alderton Cross-roads.
Malmesbury	8	(1)At Tetbury Hill/Tetbury Hill Gardens junction. (2)At Tetbury Hill/Poole Rd junction. (3)At Park Rd/Park Mead junction. (4)At Parklands/White Lion Park junction. (5)At junction of Parklands with B4040. (6)At Common Rd/Dark Lane junction. (7)At High St/Kings Wall junction. (8)By toilets on Oxford St opposite church.
Norton	1	At junction of Honey Lane with the road between Foxley and Gorseley Leaze.
Oaksey	1	In Bendy Bow cul-de-sac.
Sherston	2	(1)On Easton Town Rd on junction near Forlorn. (2)Top of Tanners Hill at junction with Grove Rd on the small triangle asphalt below the limited access sign



## Malmesbury Area Board 10 November 2010

### Public Consultation

#### Wiltshire Local Transport Plan 2011 - 2026

The Council has a statutory duty to review and publish a new Local Transport Plan (LTP) by the end of March 2011. In essence, Local Transport Plans steer the implementation of national transport policies at the local level.

The Wiltshire Local Transport Plan is made up of:

- A long-term transport strategy that seeks to:
  - support economic growth
  - reduce carbon emissions
  - contribute to better safety, security and health
  - promote equality of opportunity
  - improve quality of life and promote a healthy natural environment
- A shorter-term implementation plan based on a realistic assessment of available funding, and
- A number of supporting strategies and technical documents.

In addition, the Local Transport Plan provides the framework for all other organisations with a direct or indirect involvement in transport in Wiltshire.

Consultation on the draft Local Transport Plan will run from **4 October to 26 November 2010**.

The preferred method of communication is for comments to be submitted online at: <http://consult.wiltshire.gov.uk/portal>, where electronic copies of all the documents will be available. Paper copies of the summary document, questionnaire and a reference copy of the Local Transport Plan will also be available from all libraries and main Council offices.

The Council's Cabinet and full Council will consider the results of the consultation in February 2011 prior to the publication of the final Local Transport Plan in March 2011.

**Consultation Portal Link:** <http://consult.wiltshire.gov.uk/portal>



## MALMESBURY AREA BOARD

*Please note: all items are provisional and subject to change*

Date	Cabinet Member Attending	Location	Area Board Agenda Items (including officer contact details)
19 January 2011	Cllr John Brady	Malmesbury Town Hall	<p><b>Community items:</b>                      Local Transport Plan funding allocation feedback and response to issues 334, 562 and 620                      Speed bumps                      Part night lighting decision                      Minety bus stop clearway                      Results of community flooding consultation</p> <p><b>Partner items</b>                      Outside body appointment update</p> <p><b>Corporate items:</b>                      Budget consultation                      The new approach to providing face to face customer access to Council services                      Outcome of leisure facilities review                      Dog control orders                      Street trading</p> <p><b>Community Area Grants will be considered.</b></p>
16 March 2011	Cllr Fleur de Rhe Philipe	Ashton Keynes Village Hall	<p><b>Community items:</b></p> <p><b>Partner items:</b></p> <p><b>Corporate items:</b></p> <p><b>Community Area Grants will be considered.</b></p>
4 May 2011	To be confirmed	Sherston Village Hall	<p><b>Community items:</b></p> <p><b>Partner items:</b></p> <p><b>Corporate items:</b></p> <p><b>Community Area Grants will be considered.</b></p>

Community area manager: Miranda Gilmour (miranda.gilmour@wiltshire.gov.uk)

Democratic services officer: Alexa Smith (alexa.smith@wiltshire.gov.uk)

Service director: Jacqui White (jacqui.white@wiltshire.gov.uk)

